



TLI-1530A

- > RECHARGEABLE
- > Up to 5000 cycles
- > Extremely low self discharge rate
- > Charging possible at extreme temperatures

Performance Data

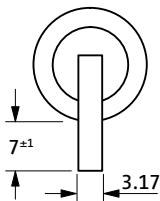
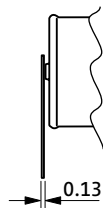
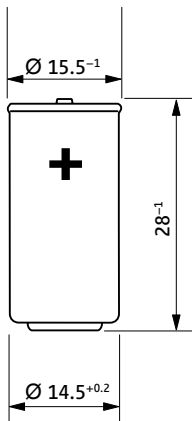
(Typical values for batteries stored at +25 °C for one year)

System	Lithium Intercalated Compounds	
Nominal voltage	4 V	
Max. capacity	150 mAh	
Max. continuous discharge current	1 A	
Pulse current capability	2.5 A	
Discharge end voltage	2.5 V	
Max. charge voltage	4.1 V	
Max. charge current	50 mA	10 mA
Temperature range	-20 °C ... +50 °C	-40 °C ... +85 °C
Cell impedance @ 1 kHz, RT	max. 175 mΩ	
Nominal energy	max. 0.5 Wh	
Weight	10 g	

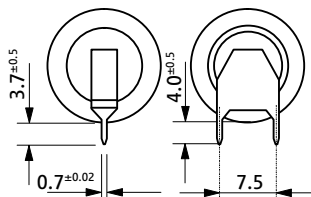
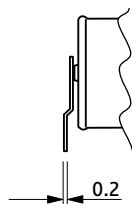
For more information please refer to page 46.



TLI-1530A/S

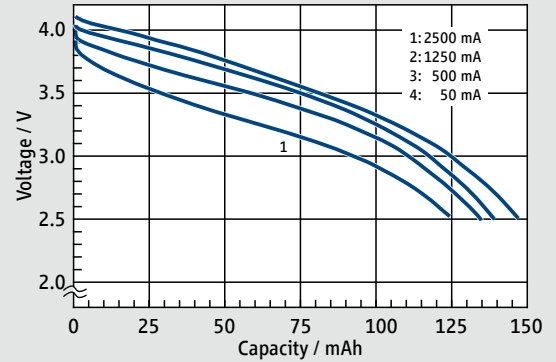


TLI-1530A/T

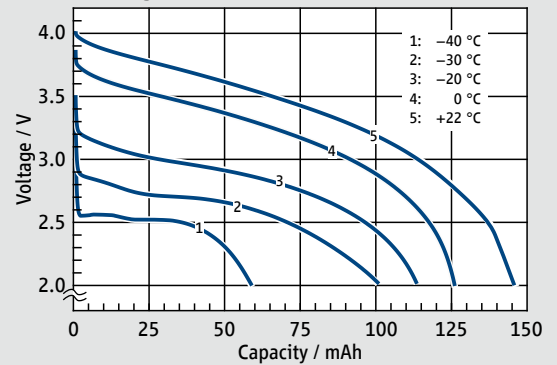


TLI-1530A/TP

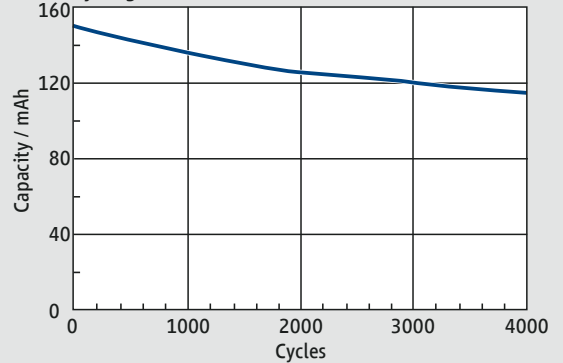
Discharge Curve at 25 °C



Discharge Curve at 1 A



Cycling Performance



Available Terminations

Termination	Standard	Catalogue No.
TLI-1530A/S	Standard	13 2 11531 02
TLI-1530A/T	Tags	13 2 11532 02
TLI-1530A/TP	Polarized tags	13 2 11537 02

Warning:
 Fire, explosion,
 and severe burn hazards.
 Do not disassemble, heat
 above 100 °C, short circuit,
 incinerate or expose
 contents to water.
 Do not charge above 4.1 V.
 Please refer to TLI-guidelines.